



# SITE & WELFARE SERVICES PRODUCT GUIDE

# WHY CHOOSE HARLEQUIN?

Harlequin Office Furniture Limited is a family run business, based in Scunthorpe, North Lincolnshire, and was established in 1991. In the early days, we recognised the need for a budget office furniture supply, and in response to this, Harlequin specialised in the supply of good second hand furniture and cost effective products. Harlequin also offered entry level furniture for hire, which due to the economy at the time was particularly attractive to the construction industry. We have progressed over the years to provide a diverse range of quality furniture to suit any budget or requirement.

Harlequin soon realised that the construction, modular and portable building industries required a full range of quality, cost effective, site services and site welfare and office furniture. We consulted with key accounts within this sector, and consequently sourced and developed products and reactive lead times that met with this demand within the fast paced industry.

Over the years Harlequin has built a wide portfolio of clients from across all sectors. We have designed, planned, project managed and successfully delivered thousands of projects from a single site office through to fully bespoke high profile projects. Our commitment to these business sectors have seen Harlequin grow into a market leader in this industry.

Harlequin's product portfolio has also grown and is more diverse than ever. Products offered are synonymous with quality and reliability whilst offering exceptional value for money. Harlequin has invested heavily in the products it supplies, and the manufacturing partners we use are carefully selected for their flexibility and loyalty.

Harlequin have their own dedicated delivery team, most have had many years' experience which is passed on down the team. The excellent feedback from our customers demonstrates that we are meeting the required high level of service our customers expect. Likewise, our sales team and sales support team are there to offer assistance on products, planning and arranging deliveries.

*"The entire team on site were professional and courteous at all times, their work effort was outstanding and they are a true asset to your business. I would not hesitate in using your services again."*

Morag Scott

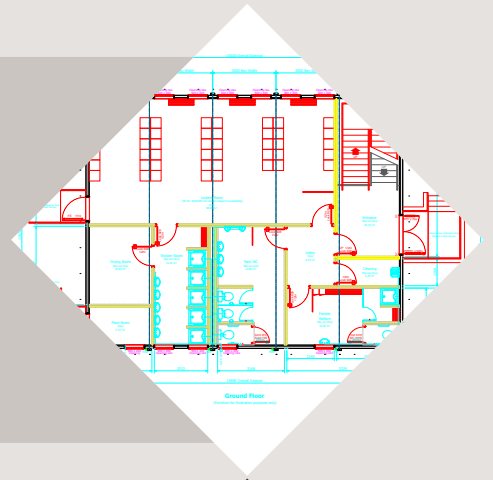
*"We will continue to use Harlequin on an ongoing basis as our expanding business needs to grow and we'd wholeheartedly recommend Harlequin to other businesses looking for a quality partner to provide a complete office solution service."*

Mark Dann

# OUR SERVICES

## MEASURING & SPACE PLANNING

Our CAD team have years of experience within the office furniture industry, and can offer professional 2D space plans. We carefully take into account each project and offer solutions whilst still considering today's health and safety guidelines.



## FURNITURE RANGES

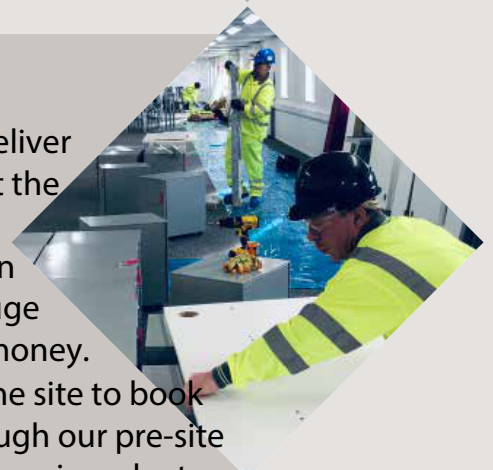
We have a comprehensive range of products we can offer to cabin, construction, modular building divisions and any office or welfare space. From office blocks to schools and colleges, we are able to create and supply innovative and contemporary styles, including modern classics, to fulfil any customer requirements and budget.



## INSTALLATION

Whether it's a small or large installation, our dedicated teams deliver all over the country. We also offer a service in which we can visit the site prior to the delivery and installation taking place. This is to ensure the site is ready for us, and to ensure that any unforeseen issues are resolved before we arrive. This has proven to be of huge importance by helping the client and ourselves save time and money.

Prior to the installation date, our operations team will contact the site to book in the delivery, making sure site are ready for us, and to go through our pre-site check list. We kindly ask site contacts to complete this form with us in order to avoid any unforeseen delays or issues once we arrive on site, and to also let us know what is expected of us on site. Failure to inform us of any potential delay, induction, or any site specific requirement etc... may result in extra charges. RAMS will be sent upon request via email and a paper copy sent to site with the delivery team. Direct contact will be made to the end user to ensure all of the health and safety requirements and policy's are met. \*\*We do NOT complete floor or wall fixing on lockers, fast food units, or any of our products, we also do not fit any electrical products or equipment, such as power modules.\*\*



Delivery and installation POA. Pictures shown may vary from actual products. We always maintain the best pricing possible, however due to recent manufacturing, shipping and material increases we are required to review on a 6 monthly basis at this time and need to inform that should there be any price increases or decreases we will advise you immediately of these changes and dates that they will be valid from, which will supersede these set out in the guide.

# INDEX

DESKING	6
WORKSTATIONS	6-7
PEDESTALS	7
TABLES	7-8
RECEPTION	8
BOOKCASES	8-9
CONFERENCE TABLES	9
STEEL STORAGE	9-10
CUPBOARDS	10
SEATING	11
BREAK OUT	11-12
DRAWING/PLANNING OFFICE	12
BOARDS	13
ACCESSORIES	13
LOCKERS	14-15
DRYING ROOM	15-16
CANTEEN	16-17
SEATING	17
ACCESSORIES	17
APPLIANCES	17-18





## Oak 1500mm 2 Drawer Single Pedestal Desk

- W1500 x D750 x H727mm
- Strengthening bars on legs
- Metal drawer runners
- Lockable drawers, supplied with 2 keys per lock
- Alloy handles
- Metal on metal fittings
- Scratch resistant

Code

SP1500/2/O



## Oak 1200mm 2 Drawer Single Pedestal Desk

- W1200 x D750 x H727mm
- Strengthening bars on legs
- Metal drawer runners
- Lockable drawers, supplied with 2 keys per lock
- Alloy handles
- Metal on metal fittings
- Scratch resistant

Code

SP1200/2/O



## Oak 1500mm 3 Drawer Single Pedestal Desk

- W1500 x D750 x H727mm
- Strengthening bars on legs
- Metal drawer runners
- Lockable drawers, supplied with 2 keys per lock
- Alloy handles
- Metal on metal fittings
- Scratch resistant

Code

SP1500/3/O



## Oak 1200mm 3 Drawer Single Pedestal Desk

- W1200 x D750 x H727mm
- Strengthening bars on legs
- Metal drawer runners
- Lockable drawers, supplied with 2 keys per lock
- Alloy handles
- Metal on metal fittings
- Scratch resistant

Code

SP1200/3/O



## Oak 1500mm Double Pedestal Desk (2dr/2dr)

- W1500 x D750 x H727mm
- Strengthening bars on legs
- 2/3 Drawer options
- Metal drawer runners
- Lockable drawers, supplied with 2 keys per lock
- Alloy handles
- Metal on metal fittings
- Scratch resistant

Code

DP1500/22/O



## Oak 1600mm R/H Radial Workstation

- W1600 x D1200/800 x H727mm
- 25mm top
- Port Holes
- Scratch resistant
- Right hand shown

Code

16RHR/25/O



## Oak 1600mm L/H Radial Workstation

- W1600 x D1200/800 x H727mm
- 25mm top
- Port holes
- Scratch resistant
- Left hand shown

Code  
16LHR/25/O



## Oak 1600mm x 800mm Rectangular Workstation

- W1600 x D800 x H727mm
- 25mm top
- Available in oak as standard
- Adjustable cantilever feet
- Metal on metal fixings
- Port holes
- Scratch resistant

Code  
16STR/25/O



## Silver 3 Dr Metal Filing Pedestal

- W390 x D523 x H600mm (SLIM Version - W300mm)
- 2 drawers and 1 filing drawer
- Includes pen tray
- Includes 2 keys
- Metal on metal fixings

Standard

Slim Line

Code  
PED390/SIL

Code  
PED300/SIL



## Oak Desk High Pedestal 2 Standard/1 File Dr

- W427 x D600 x H727mm
- 2 standard drawers and deep filing drawer.
- Supplied with 2 keys
- 25mm top
- Smooth metal runners
- Alloy handles

Code  
6DHP/25/O



## Oak Desk Under Filing Pedestal 2+1 File Dr

- W427 x D530 x H690mm
- 2 standard drawers
- 1 filing drawer
- supplied with 2 keys
- 25mm top
- Smooth metal runners
- Alloy handles

Code  
6DUP/25/O



## Oak 750 x 750mm Table

- W750 x D750 x H729mm
- Bolt on legs
- 18mm MFC top
- Scratch resistant
- Also available as coffee table  
COFT750/O (750x750mm)

Code  
T750/O



## Oak 1200 x 750mm Table

- W1200 x D750 x H729mm
- Bolt on legs
- 18mm MFC top
- Scratch resistant top

Code

T1200/O



## Oak 1500 x 750mm Table

- W1500 x D750 x H729mm
- Bolt on Legs
- 18mm MFC top
- Scratch resistant top

Code

T1500/O



## Oak 1800 x 750mm Table

- W1800 x D750 x H729mm
- Bolt on Legs
- 18mm MFC top
- Scratch resistant top

Code

T1800/O



## Oak 1200mm Dia Round Table

- Cruciform base
- 25mm top
- 1200mm diameter
- Scratch resistant top

Code

RT1200/O



## Oak Modular Reception Unit c/w Glass Shelf

- W2400 x H1140 x D1600mm
- Universal legs allowing the unit to be left or right handed
- Floating glass shelf
- Oak finish
- Also available in White
- Scratch resistant finish

Code

RC1160/O



## Oak 1200 Open Bookcase Unit

- W800 x D300 x H1200mm
- Adjustable shelves
- Steel shelf pins
- A4 files shown

Code

BK1200/O



## Oak 1600 Open Bookcase Unit

- W800 x D300 x H1600mm
- Adjustable shelves
- Steel shelf pins
- A4 files shown

Code  
BK1600/O

BOOKCASES



## Oak 1800x1000mm Conference Table

- W1800 x D1000 x H740mm
- 25mm top
- Oak finish, also available in White
- Seats 6-8 people
- Silver frame
- I-frame allows maximum seating capacity
- Metal on metal fittings give added strength and rigidity

Code  
CT1800/O



## Oak 2400x1200mm Conference Table

- W2400 x D1200 x H740mm
- 25mm top
- Oak finish, also available in White
- Seats 10-12 people
- Silver frame
- I-frame allows maximum seating capacity
- Metal on metal fittings give added strength and rigidity

Code  
CT2400/O



## Oak 3400x1200mm Conference Table

- W3400 x D1200 x H740mm
- 25mm top
- Oak finish, also available in White
- Seats 10 - 12
- Silver frame
- I-frame allows maximum seating capacity
- Metal on metal fittings give added strength and rigidity

Code  
CT3400/O



## Oak Central Filler Table 1400x1200mm

- W1400 x D1200 x H740mm
- Extends 3.4 to 4.8m
- 25mm top
- Oak finish, also available in White
- Silver frame
- I-frame allows maximum seating capacity
- Metal on metal fittings give added strength and rigidity

Code  
CFT1400/O

CONFERENCE TABLES



## Grey Two Drawer Filing Cabinet

- W460 x D620 x H730mm
- Anti tilt mechanism
- 100% opening drawers
- 30KG weight limit per drawer
- Lockable, supplied with 2 keys

Code  
AC2/G

STEEL STORAGE





## Grey Three Drawer Filing Cabinet

- W460 x D620 x H1024mm
- Anti tilt mechanism
- 100% opening drawers
- 30KG weight limit per drawer
- Lockable, supplied with 2 keys

Code  
AC3/G



## Grey Four Drawer Filing Cabinet

- W460 x D620 x H1321m
- Anti tilt mechanism
- 100% opening drawers
- 45KG weight limit per drawer
- Lockable, supplied with 2 keys

Code  
AC4/G



## Grey 1016H Steel 2 Dr Cupboard c/w 1 Shelf

- W914x D381 x H1016mm
- Hinged doors
- Includes 1 Shelf
- Fitted with 2 point locking system
- Lockable supplied with 2 keys

Code  
AZ4DD1/G



## Grey 1829H Steel 2 Dr Cupboard c/w 3 Shelves

- W914 x D381 x H1829mm
- Hinged doors
- Includes 3 shelves
- Fitted with 2 point locking system
- Lockable supplied with 2 keys

Code  
AZ7DD3/G



## Oak Two Door Desk High Cupboard

- W800 x D600 x H730mm
- 25mm oak MFC E1 board with 2mm edge
- 18mm side panels, shelf and back
- Adjustable shelf, lockable doors
- Lockable, supplied with 2 keys
- Steel shelf pins

Code  
CUP700/25/O



## Oak Two Door Cupboard c/w 4 Shelves

- W800 x D400 x H1800mm
- 18mm oak MFC E1 board with 2mm edge
- 18mm side panels, shelves and back
- Adjustable shelves, lockable doors
- Lockable, supplied with 2 keys
- Steel shelf pins

Code  
CUP1800/18/O



## Black Fabric Padded Seat & Back 4 Leg Chair

Black Fabric

- Welded steel tubular frame
- Stackable
- Optional armrest
- Strengthened frame for rigidity
- Available in blue fabric (ISO/BL) - POA
- Available in PU leather (ISO/BKV) - POA

Code  
ISO/BK



## Black High Back Operators Chair

- Twin Lever
- H970mm x W620mm x D550mm
- Black Components
- Fixed Arms
- 5year guarantee (8 hour use)
- 5 star base
- **Available with arms (J2/BK)**

ARMS

NO ARMS

Code  
J2/BK

Code  
J1/BK



## Spartan Black Mesh Back Side Chair with Arms

- Black nylon mesh back
- Fabric mesh seat
- Silver powder coated frame
- PU arms
- Stackable

Code  
SPARTANV/BK



## Managerial Chair

- High back swivel chair
- Mechanism & gas lift
- Starbase & castors
- Fixed arms
- Charcoal fabric as standard
- Available in black vinyl (ARTEMIS/PU)

Fabric

PU Leather

Code  
ARTEMIS

Code  
ARTEMIS/PU



## Trojan Task Chair

- High back task chair
- Gas height & back rake adjustment
- 3 lever mechanism
- Height adjustable arms
- 5 star base
- Seat tilt mechanism

Fabric Back

Mesh Back

Code  
TROJANF/BK

Code  
TROJAN



## Trojan Visitor Chair

- Black high back mesh meeting chair
- Fixed arms
- Chrome cantilever base
- Padded Seat

Code  
TROJANV



## Reception Box Chair

- W560 x D720mm
- Modular
- Upholstered to order
- Available in a choice of Phoenix fabrics
- Can be used as a single unit or as part of a modular unit in your choice of configuration

Code  
BRS



## Reception Box Chair

- W620 x D720mm
- Modular
- Right hand arm
- Upholstered to order
- Available in a choice of Phoenix fabrics
- Can be used as a single unit or as part of a modular unit in your choice of configuration

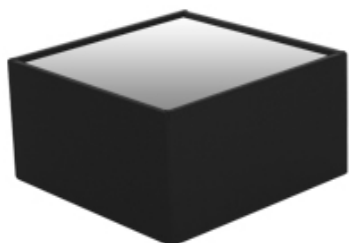
Code  
BRS/R



## Reception Box Chair

- W620 x D720mm
- Modular
- Left hand arm
- Upholstered to order
- Available in a choice of Phoenix fabrics
- Can be used as a single unit or as part of a modular unit in your choice of configuration

Code  
BRS/L



## Reception Coffee Table

- W620 x D620mm
- Modular
- Upholstered to order
- Available in a choice of Phoenix fabrics

Code  
BTS



## A0 Size Plan Hanging Trolley

- All steel construction
- Self assembly
- Castors
- A0 size drawings, however will also take A1 drawings

Code  
A0T



## A0 Size Plan Hanger Clip (Single)

- Suspended at both ends
- Ergonomic spring steel clips
- A0 size drawings, however will also take A1 drawings

Code  
A0H



## Double Sided Board

- Available in two sizes
- Magnetic dry wipe board one side
- Durable felt pinboard other side
- Supplied with fixings
- Double sided board
- Multipurpose - single stock holding and longevity of use & value for money

1200 x 900      1800 x 1200

Code  
90120

Code  
120180



## Hat and Coat Stand

- Black stand with plastic fittings
- 9 hooks
- Metal construction
- Trumpet base

Code  
COATSTAND/BK



## Waste Paper Bin

- 15 Litre black waste bin
- Easy wipe clean
- Durable black plastic
- Also available as 50 litre swing bin, comes in black or silver

50 Ltr Swing Bin

15 Ltr Bin

Code  
BIN2

Code  
BIN1



## Desk Mounted Screens

- Lengths available in - 1200/1400/1600/1800mm
- Std height is 480>280mm
- Includes brackets
- Fabric trim as standard
- Upholstered to order
- Available in a choice of fabrics

Code



## Cable Management

- Under desk cable management

Code

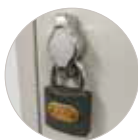


## Power Modules

- Power points
- Smart charge
- Desk mount available
- More configurations available

Code



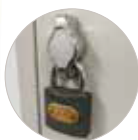


## Grey 12x12 Single Door Locker c/w Tap Lock

- W305 x D300 x H1850mm
- Reinforced doors
- Hasp & staple to accept padlock as standard
- Cam lock with 2 keys available to order
- Side & rear fixing points
- Vented door
- Name plate area
- Enamel finish for easy clean

Code

LK1/G

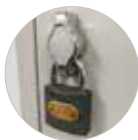


## Grey 12x12 Two Door Locker c/w Tap Lock

- W305 x D300 x H1850mm
- Reinforced doors
- Hasp & staple to accept padlock as standard
- Cam lock with 2 keys available to order
- Side & rear fixing points
- Vented door
- Name plate area
- Enamel finish for easy clean

Code

LK2/G

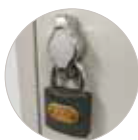


## Grey 12x12 Three Door Locker c/w Tap Lock

- W305 x D300 x H1850mm
- Reinforced doors
- Hasp & staple to accept padlock as standard
- Cam lock with 2 keys available to order
- Side & rear fixing points
- Vented door
- Name plate area
- Enamel finish for easy clean

Code

LK3/G



## Grey 12x12 Four Door Locker c/w Tap Lock

- W305 x D300 x H1850mm
- Reinforced doors
- Hasp & staple to accept padlock as standard
- Cam lock with 2 keys available to order
- Side & rear fixing points
- Vented door
- Name plate area
- Enamel finish for easy clean

Code

LK4/G



## Grey 12x12 Six Door Locker c/w Tap Lock

- W305 x D300 x H1850mm
- Reinforced doors
- Hasp & staple to accept padlock as standard
- Cam lock with 2 keys available to order
- Side & rear fixing points
- Vented door
- Name plate area
- Enamel finish for easy clean

Code

LK6/G



Picture for illustration purposes only

## Single Door Wire Mesh Locker (Nest of 2)

- W610 x D305 x H1980mm
- Rear wall fixing lugs
- Integral name plates
- Padlock fitting as standard
- Supplied in nests of 2 (as pictured)
- Padlocks and keys available on request (2 x compartments)

Code

1212/D1/MESH/CON



Picture for illustration purposes only

## Two Door Wire Mesh Locker (Nest of 2)

- W610 x D305 x H1980mm
- Rear wall fixing lugs
- Integral name plates
- Padlock fitting as standard
- Supplied in nests of 2 (as pictured)
- Padlocks and keys available on request (2 x compartments)

Code  
1212/D2/MESH/CON



Picture for illustration purposes only

## Three Door Mesh Locker (Nest of Two)

- W610 x D305 x H1980mm
- Rear wall fixing lugs
- Integral name plates
- Padlock fitting as standard
- Supplied in nests of 2 (as pictured)
- Padlocks and keys available on request (2 x compartments)

Code  
1212/D3/MESH



Picture for illustration purposes only

## Four Door Mesh Locker (Nest of Two)

- W610 x D305 x H1980mm
- Rear wall fixing lugs
- Integral name plates
- Padlock fitting as standard
- Supplied in nests of 2 (as pictured)
- Padlocks and keys available on request (2 x compartments)

Code  
1212/D4/MESH



Picture for illustration purposes only

## Silver Perforated Four Door Locker

- W450 x D450 x H1800mm
- Perforated doors for ventilation
- Name plate
- Wall & side fastening points
- C/W Lock & 2 keys - microban anti-bac key fobs
- Ideal for items such as laptops, motorbike helmets and workboots

Code  
LK4/450/S



## 1500 Single Sided Cloakroom Unit (3 Slats)

- W1505 x D410 x H1740mm
- Welded floor & wall fixing brackets
- 13 coat hooks
- Fully welded uprights
- Black powder coated metal slats

Code  
NCU15SS



## 1500 Double Sided Cloakroom Unit (6 Slats)

- W1505 x D755 x H1740mm
- Welded floor & wall fixing brackets
- 26 coat hooks
- Fully welded uprights
- Black powder coated metal slats

Code  
NCU15DS



## 1500mm Bench Unit (No Hooks) 3 Slats

- W1505 x D275x H370mm
- Welded floor fixing brackets
- Fully welded uprights
- Black powder coated metal slats

Code

NBU15



## 1200 Single Sided Cloakroom Unit (3 Slats)

- W1200 x D410 x H1750mm
- Welded floor & wall fixing brackets
- 10 coat hooks
- Fully welded uprights
- Black powder coated metal slats

Code

NCU12SS



## 1200 Double Sided Cloakroom Unit (6 Slats)

- W1220 x D760 x H1760mm
- Welded floor & wall fixing brackets
- 20 coat hooks
- Fully welded uprights
- Black powder coated metal slats

Code

NCU12DS



## Fast Food Unit 2 Seater (single entry)

- W600mm x D1630mm (overall dimensions)
- 25mm laminate top with bullnose edging
- Robust powder coated steel frames
- Black poly seats
- Smooth wipe down shells
- Spare shells/available for refurb purposes
- Floor fixing brackets

Code

N2SE/SGY



## Fast Food Unit 4 Seater (single entry)

- W1100mm x D1590mm (overall dimensions)
- 25mm laminate top with bullnose edging
- Robust powder coated steel frames
- Black poly seats
- Smooth wipe down shells
- Spare shells/available for refurb purposes
- Floor fixing brackets

Code

N4SE/SGY



## Fast Food Unit 4 Seater (double entry)

- W1100mm x D1590mm (overall dimensions)
- 25mm laminate top with bullnose edging
- Robust powder coated steel frames
- Black poly seats
- Smooth wipe down shells
- Spare shells/available for refurb purposes
- Floor fixing brackets

Code

N4DE/SGY



## Fast Food Unit 6 Seater (double entry)

- W1530mm x D1600mm (overall dimensions)
- 25mm laminate top with bullnose edging
- Robust powder coated steel frames
- Black poly seats
- Smooth wipe down shells
- Spare shells/available for refurb purposes
- Floor fixing brackets

N6DE/SGY



## Black/White 6ft Blow Moulded Table

- Blow moulded
- Robust quality
- L1820 x W755mm x H735mm
- Folding legs
- Lightweight yet very durable
- Black gives longer longevity
- Also available in black (YX-C182/BK)

White

Code

YX-C182

Black

Code

YX-C182/BK



Picture for illustration purposes only

## Black Poly Chair

- Welded steel frame
- Wipe clean surface
- Black only
- Lightly textured poly chair
- Reinforced leg for strength
- Can stack 20 chairs high with good stability

Code

ACF/BK



## Padlock

- Metal padlock
- Supplied with 2 keys
- Fit our hasp & staple locker fittings

Code

LOCKS



## White Cordless Kettle (No Warranty)

- 2.2 kw
  - 1.7 Litre capacity
  - Boil dry protection
  - Pull back lid
- NO WARRANTY

Code

KETTLE



## White Larder Under Counter Fridge

- 95 Litre capacity
  - 3 adjustable shelves
  - Salad storage drawer
  - 3 door compartments
  - No ice box - longer internal capacity
  - W475 x H840 x D440mm
- NO WARRANTY

Code

HL92W

CANTEEN

SEATING

ACCESSORIES

APPLIANCES





## Microwave

- 700 Watt power output
  - 5 power levels
  - 17 Litre capacity
  - H250 x W420 x D290mm
- NO WARRANTY

Code  
MICRO



## Cygnet 20 Litre Burco Boiler (No Warranty)

- Double wall, polished steel finish
- None drip serving faucet
- Safety lock on lid
- Water level indicator
- CE approved
- 20 Litre

Code  
BOILER



## Dishwasher

- 6 washing programmes
  - H845 x W598 x D610mm
  - Triple A Rating
  - Adjustable racking
- NO WARRANTY

Code  
DISHWASHER

## Also available

- Height adjustable desks
- Bespoke control room furniture
- Poser height tables
- Conference room furniture
- Pods/booth with or without electrics
- Specialist seating (seating assessment forms available upon request)
- Specialist desking
- Monitor/screen arms
- Varied range of screens - floor standing and desk top
- Desk top accessories
- Breakout furniture
- Medical couches
- Plants/living walls
- Office recycling bins
- 24/7 task chairs

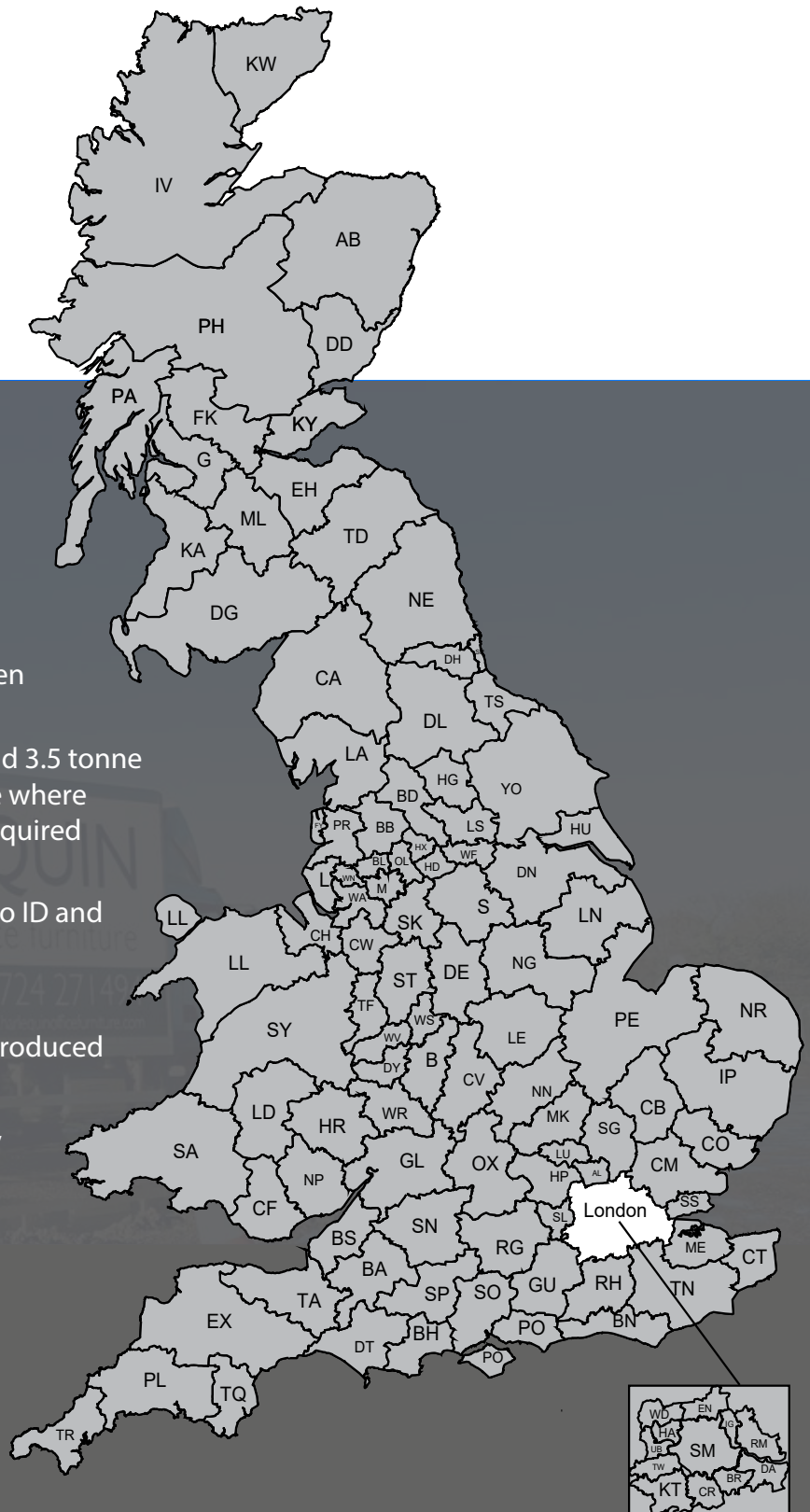
\*\*Please be aware we are able to offer most products to suit requirements, this guide is a general overview of what we can provide from our most popular ranges, however we are not limited and have a wide range of ideas and offerings from budget to upper end furniture requirements, contact us today.\*\*

## A polite confidentiality notice

The content of this document is the ownership of Harlequin Office Furniture Limited. We respectfully ask that, due to the amount of time and expenditure that has been invested in putting this document together, and the potential value of it's contents to a third party, all information and ideas expressed within must be kept confidential.

## Delivery & Install Service - POA

- Delivery is available throughout the UK
- Installation upon request
- Remove all packaging & operate a strict green credential policy
- Most deliveries are made using 7.5 tonne and 3.5 tonne vehicles, for larger jobs, we can accomodate where necessary, with FORS Sliver haulier where required
- Our installation team carry CSCS cards, Photo ID and full PPE. We have our own black hat team.
- FORS Compliant
- Pre-site checklists conducted/ RAMS & MS produced upon request and where applicable
- ISO9001:2015, Constructionline Gold, SMAS, CHAS Premium Plus, ACCLAIM accredited,



Harlequin Office Furniture Ltd  
Unit 2 Dunlop Way  
Queensway Business Park  
Scunthorpe  
North Lincolnshire  
DN16 3RN

t. 01724 271494  
f. 01724 271498  
w. [www.harlequinofficefurniture.co.uk](http://www.harlequinofficefurniture.co.uk)  
e. [sales@harlequinofficefurniture.co.uk](mailto:sales@harlequinofficefurniture.co.uk)



 **HARLEQUIN**  
Office Furniture, Site Services & Interiors